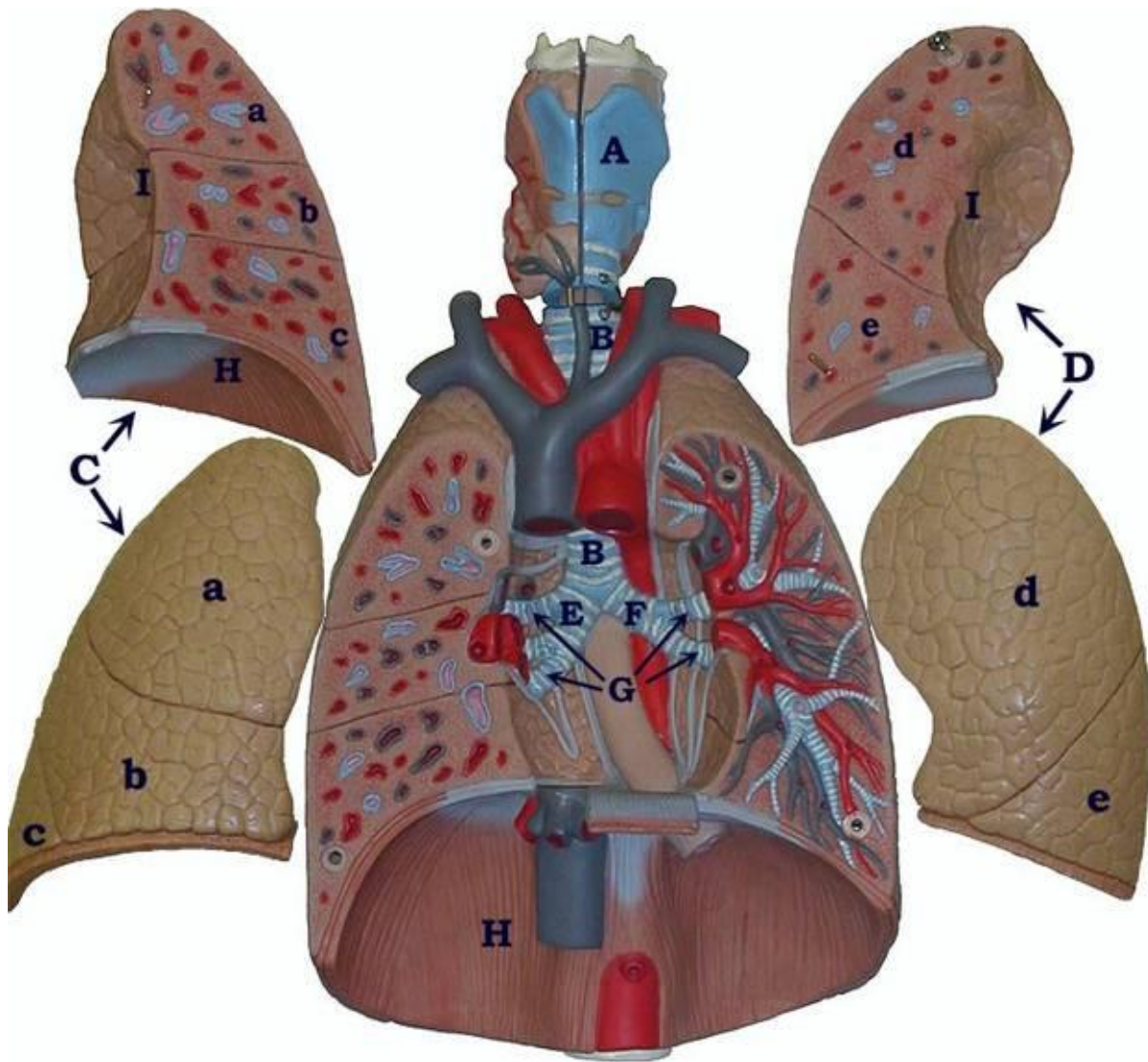


Bio 135 Anatomy Labs:

Respiratory Anatomy Lab:

Be able to identify the structures below on the models provided in lab. See key next page.



Key to Respiratory Model

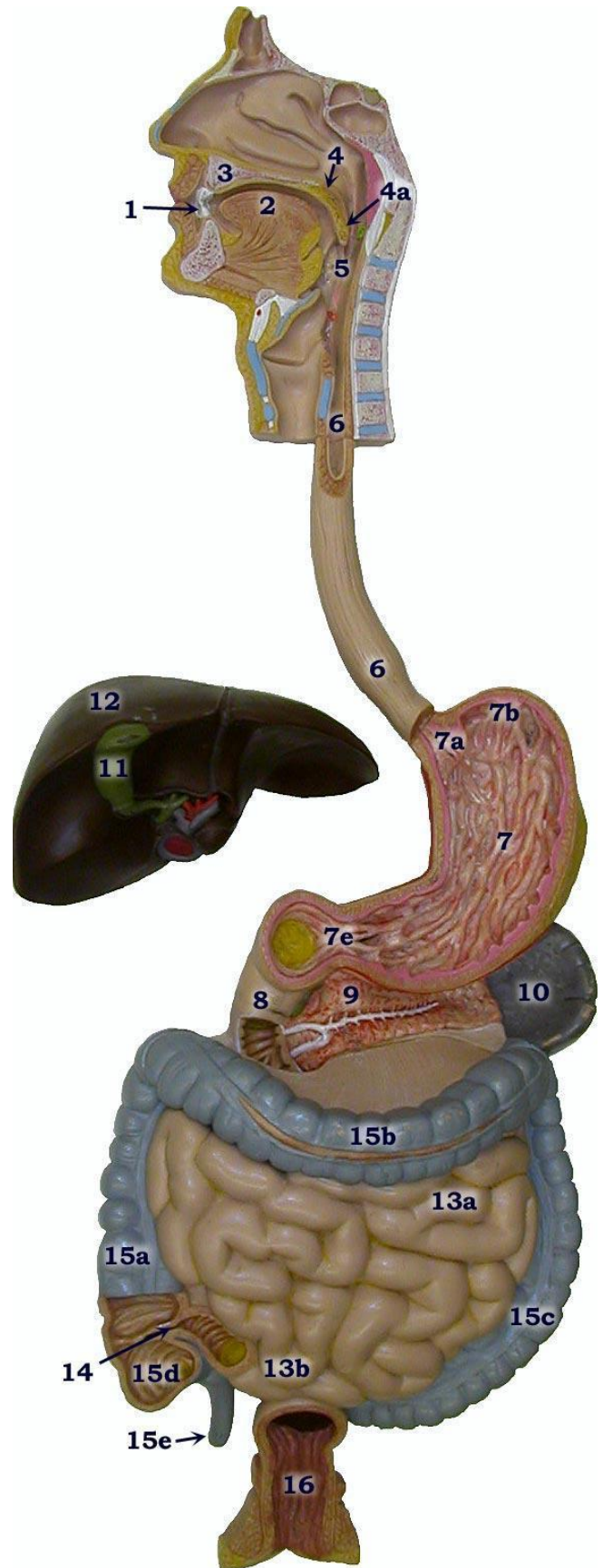
- | | |
|-----------|---|
| A. | Larynx |
| B. | Trachea |
| C. | Right Lung <ul style="list-style-type: none">a. superior lobeb. middle lobec. inferior lobe |
| D. | Left Lung <ul style="list-style-type: none">d. superior lobee. inferior lobe |
| E. | Right Primary Bronchus |
| F. | Left Primary Bronchus |
| G. | Secondary Bronchi |
| H. | Diaphragm |
| I. | Hilus Region (Hilum) |

Digestive system Anatomy lab:

Be able to identify the indicated structures (following page) on our lab models:

H. Digestive System Model Key

1. Tooth
2. Tongue
3. Hard palate
4. Soft palate
 - a. Uvula
5. Pharynx
6. Esophagus
7. Stomach
 - a. Cardiac sphincter
 - b. Fundus
 - e. Pyloric sphincter
8. Duodenum (first part of small intestine)
9. Pancreas (pancreatic duct - white lines through center of pancreas)
10. Spleen
11. Gallbladder
12. Liver
13. Small Intestine (8. Duodenum)
 - a. Jejunum
 - b. Ileum
14. Ileocecal junction
15. Large intestine (Colon)
 - a. Ascending colon
 - b. Transverse colon
 - c. Descending colon
 - d. Cecum
 - e. Vermiform appendix
16. Rectum



Nervous system anatomy:

Be able to identify the following structures on a Brain Model:

1. Frontal Lobe
2. Parietal Lobe
3. Occipital Lobe
4. Temporal Lobe
5. Central Sulcus
- 6, 7. Gyrus (Convolution)
10. Corpus Callosum
15. Parieto-occipital Sulcus
16. Transverse Fissure
19. Thalamus
20. Hypothalamus
23. Pineal Gland
24. Optic Chiasma
25. Pituitary Gland
32. Midbrain (along with 30 & 31)
35. Cerebellar Hemisphere
- 35d. Arbor Vitae
36. Pons
37. Medulla Oblongata
- I. Olfactory Nerve
- II. Optic Nerve

