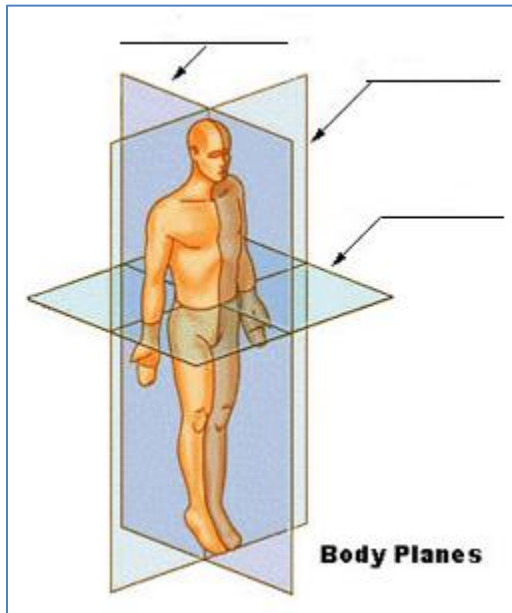


Student Name: _____ Lab day. _____

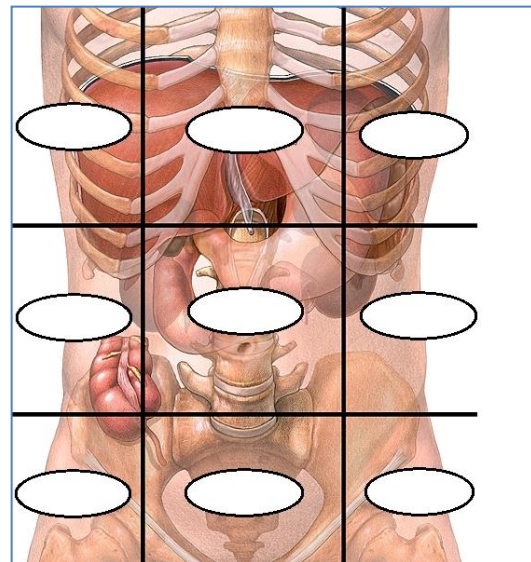
Labeling exercise for directional terminology lab:

Label the following images where indicated. You will need to review the materials on the virtual website and in your text to complete this assignment: If printed on two pages you must staple the pages together and put your name on both pages.

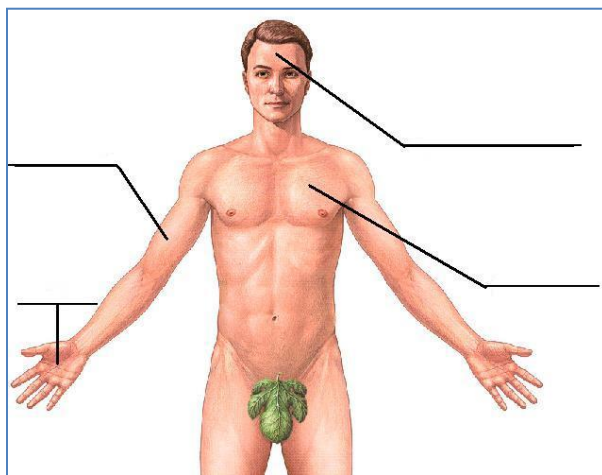
Name the indicated Planes



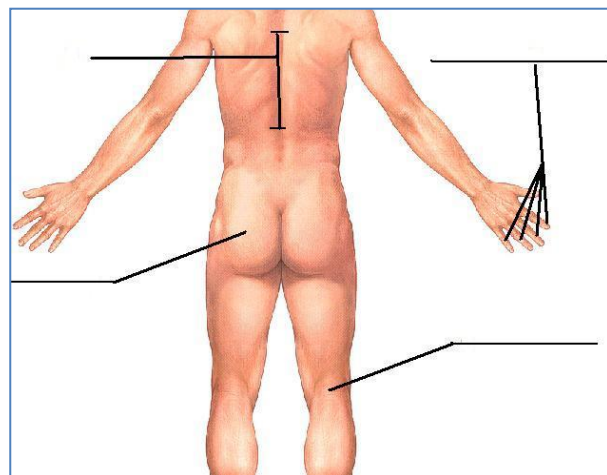
Abdominopelvic regions



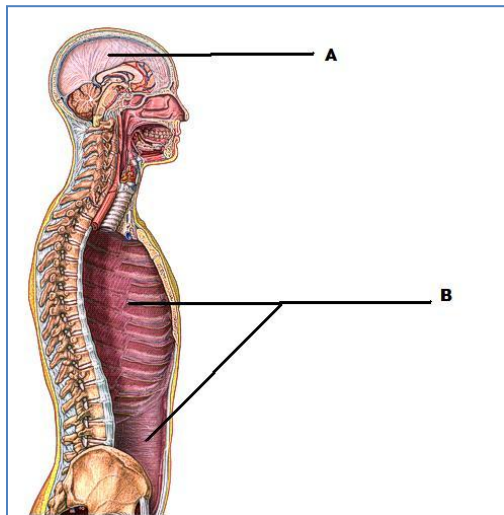
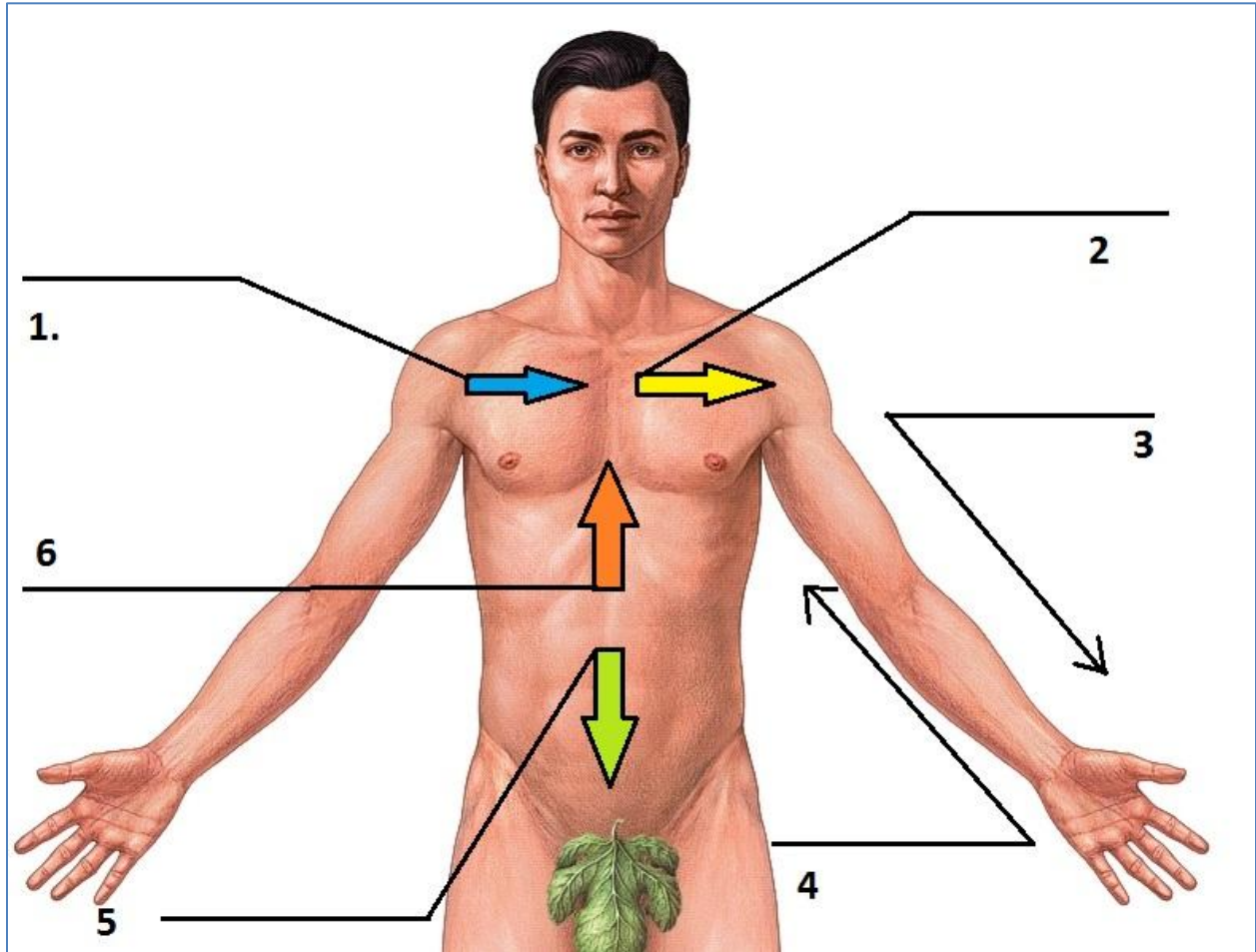
Regional terminology front



Regional terminology back



Label the indicated directional terms. 1 and 2 relate to the midline, 3 and 4 relate to the arm, 5 and 6 relate to the torso.



- | | | |
|----------------|-------------------|------------|
| abdominopelvic | frontal | popliteal |
| anterior | gluteal | posterior |
| brachial | hypogastric | proximal |
| cranial | inferior | sagittal |
| digital | lateral | spinal |
| | left/right | |
| distal | hypochondriac | superior |
| dorsal | left/right iliac | thoracic |
| epigastric | left/right lumbar | transverse |
| femoral | medial | umbilical |
| frontal | palmer | ventral |
| | | vertebral |

Identify the two cavities above.

10 pt activity. Each label including name and lab period are 1/3 of a point.